

NEXGO G2

Version 3.1 Issued September 2020

NEXGOGLOBAL.COM

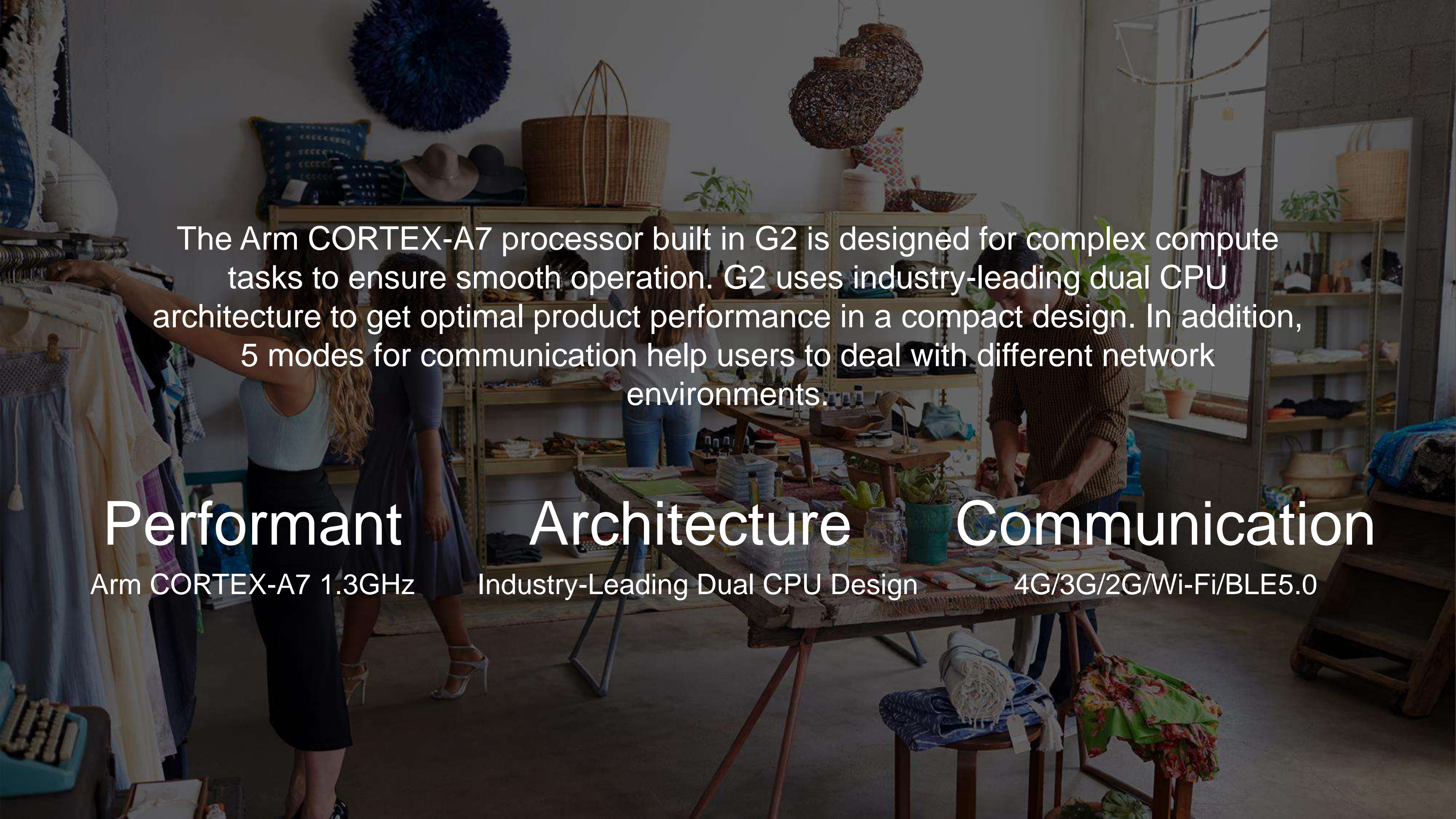
© 2020 NEXGO | The information contained in this document is subject to change without notice. All pictures shown are for illustration purpose only, actual product and software may vary. NEXGO and the NEXGO logo are either trademarks or registered trademarks of NEXGO in the China and/or other countries. All other trademarks or brand names are the properties of their respective holders.





G2

Performant
Portable POS Terminal



The Arm CORTEX-A7 processor built in G2 is designed for complex compute tasks to ensure smooth operation. G2 uses industry-leading dual CPU architecture to get optimal product performance in a compact design. In addition, 5 modes for communication help users to deal with different network environments.

Performant

Arm CORTEX-A7 1.3GHz

Architecture

Industry-Leading Dual CPU Design

Communication

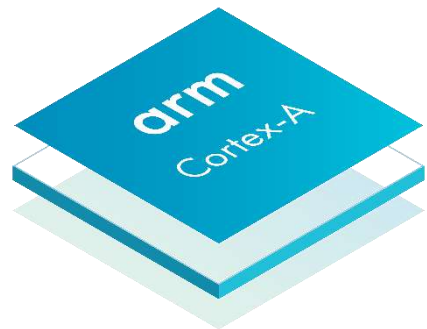
4G/3G/2G/Wi-Fi/BLE5.0

Processor and Memory

G2 uses Arm CORTEX-A7 with 256MB Flash and 256MB RAM, bringing you an smooth operation experience.

Arm CORTEX-A7

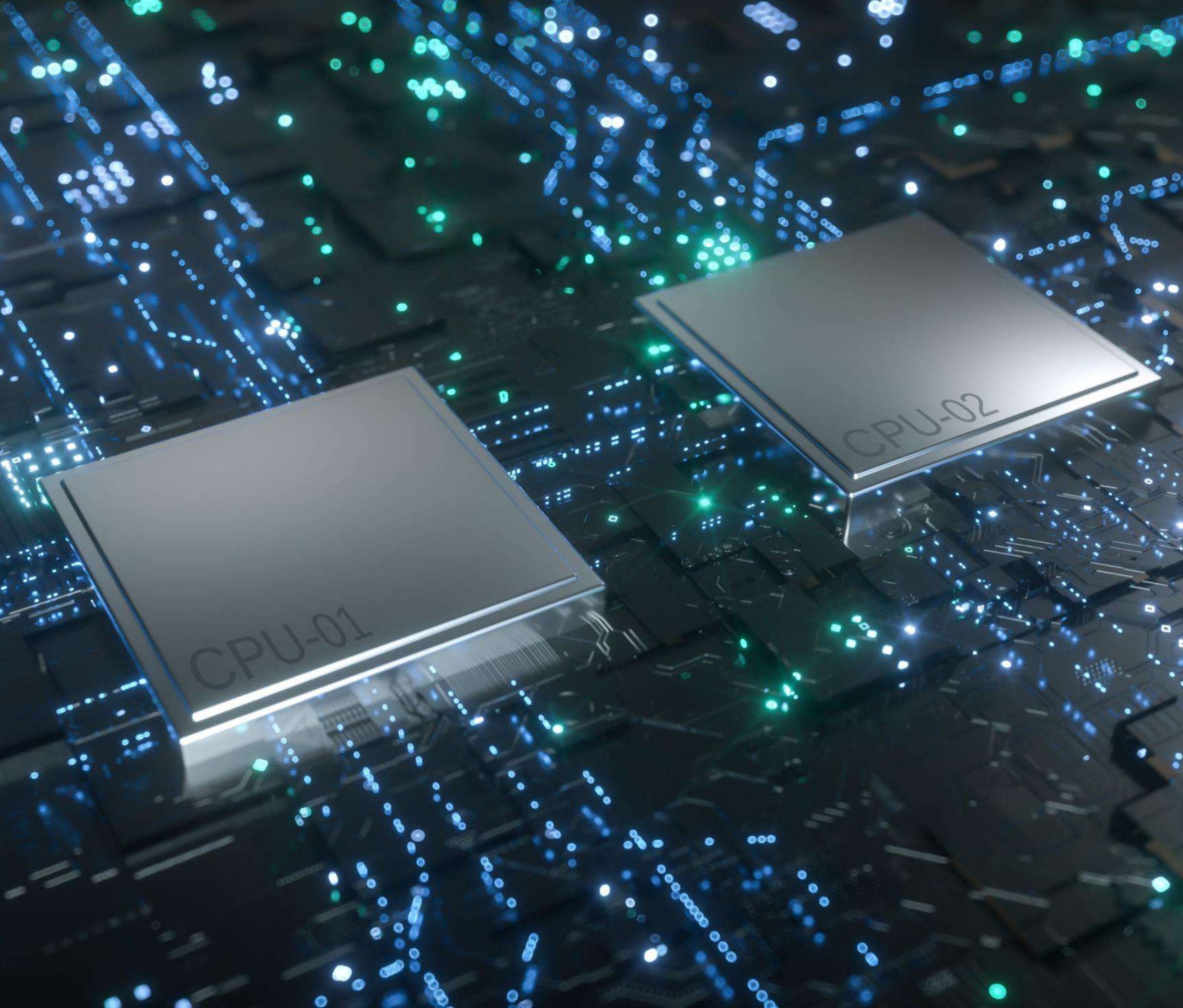
1.3GHz



Memory

256MB Flash+256MB RAM



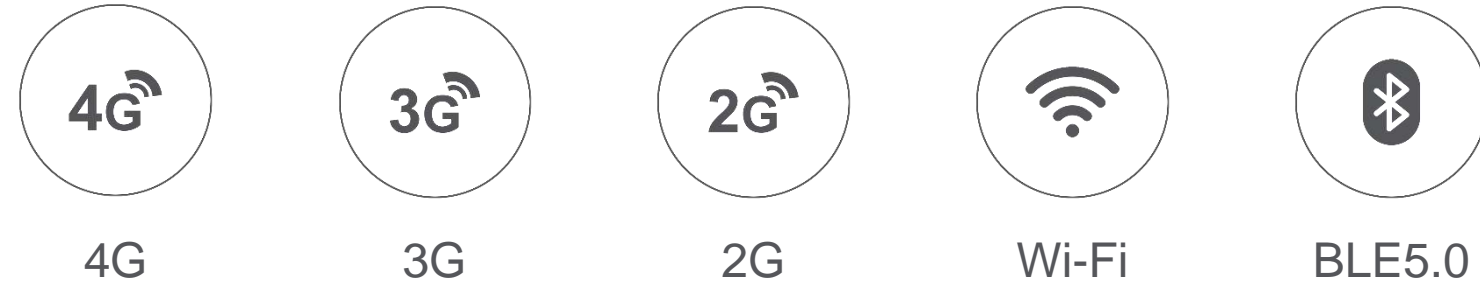


Leading Dual CPU Architecture

Industry-leading architecture enables G2 to enhance product performance in a compact design.

Use G2 Anywhere

G2 adopts **Qualcomm** chipsets and powerful communication module, to ensure fast and stable communication and strong network adaptability.



* BLE is Bluetooth Low Energy

A Higher Level of Security

NEXGO's newest security system is used in G2, which greatly improves the safety level. It supports TMS and remote keys, also effectively protects G2 from illegal dismantling and data theft.

PCI5.X Approved

Valid until 2026



Power-Efficient

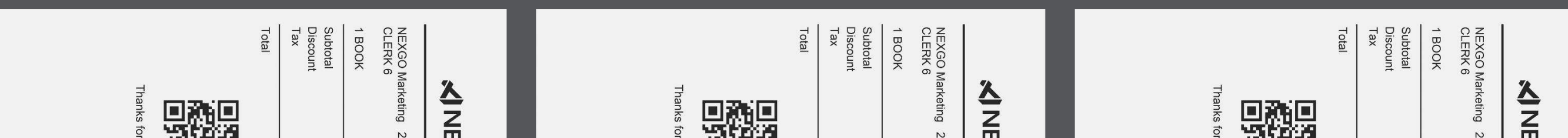
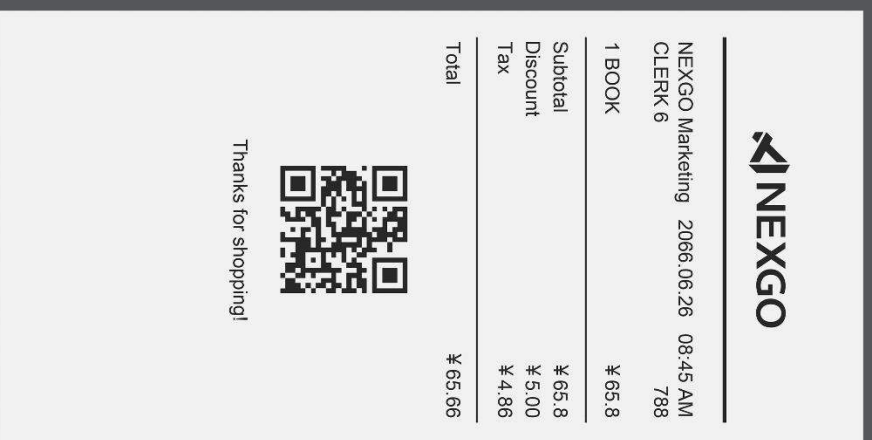
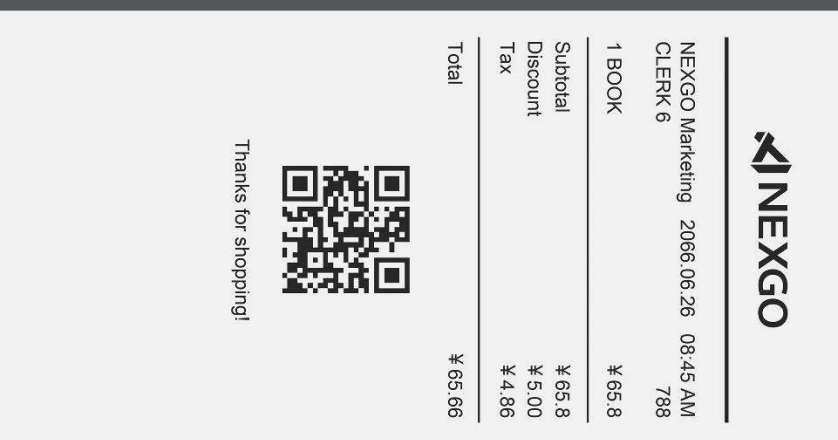
The power performance of G2 is outstanding, its battery can stand by for up to 400 hours or print 760+ receipts per charge.



400+ Hours



760+ Receipts





Certificato di esame UE del tipo
EU-type examination certificate
n. ECM 20 ATEX-B QW95
Rilasciato ai sensi della direttiva 2014/34/UE – Allegato III - Modulo B
Issued according to 2014/34/EU Directive – Annex III - Module B

Richiedente
Applicant
Ragione Sociale: Shenzhen Xinguodu Technology Co., Ltd.
Company Name
Indirizzo: 179 JinSong Mansion, Terra Industrial & Trade Park Chegongmiao, Futian District, Shenzhen, Guangdong, China
Address
Luogo di produzione: 179 JinSong Mansion, Terra Industrial & Trade Park Chegongmiao, Futian District, Shenzhen, Guangdong, China
Place of production

Apparecchiatura
Equipment
Model Name: G2
Modo di protezione: II 3G Ex IC IIB T4 Gc
Type of protection

Questa apparecchiatura o sistema di protezione e le sue eventuali varianti accettate sono descritte nel presente certificato e nell'allegato dello stesso. This equipment or protective system and any acceptable variation variants accepted are described in this Certificate and its Annex.

L'ECM, Organismo Notificato n° 1282 in conformità all'art. 17 della Direttiva 2014/34/UE del Parlamento europeo e del Consiglio del 26 febbraio 2014, certifica che questa apparecchiatura o sistema di protezione verificata secondo la procedura di cui all'allegato III, Modulo B, è conforme ai requisiti essenziali di sicurezza e salute per il progetto e la costruzione di apparecchiature e sistemi di protezione destinati ad essere utilizzati in atmosfere potenzialmente esplosive, definiti nell'allegato II della Direttiva. L'ECM, Notified Body No. 1282 in accordance with Article 17 of Directive 2014/34/EU of the European Parliament and of the Council of 26 February 2014, certifies that this equipment or protective system was examined and tested according to the procedure set out in Annex III, Module B, and is in compliance with the essential health and safety requirements for the project and construction of equipment and protective systems intended for use in potentially explosive atmospheres given in Annex II of the Directive.

Le verifiche ed i risultati di prova sono registrati nel rapporto di carattere riservato n° TH20EWR-4455. The examination and test results are recorded in confidential report no. TH20EWR-4455.

I requisiti essenziali di sicurezza e salute sono assicurati dalla rispondenza alle Norme applicate: EN IEC 60079-0:2018, EN 60079-11:2012. The essential health and safety requirements are assured by compliance with applied Standard: EN IEC 60079-0:2018, EN 60079-11:2012.

Questo Certificato di esame UE del tipo è relativo soltanto al progetto, all'esame ed alle prove dell'apparecchiatura o sistema di protezione specificato in accordo con la Direttiva 2014/34/UE. Ulteriori requisiti di questa Direttiva si applicano al processo di produzione e fornitura dell'apparecchiatura o sistema di protezione: questi requisiti non sono oggetto del presente certificato. This EU-type examination certificate relates only to the design, examination and tests specified equipment in accordance with Directive 2014/34/EU. Further requirements of the Directive shall be applied to the manufacturing process and supply condition: these requirements are not covered by this certificate.

L'apparecchiatura o il sistema di protezione deve riportare i seguenti contrassegni:
The equipment shall be marked with the following symbols:  II 3G Ex IC IIB T4 Gc

Valsamoggia (BO) 16/06/2020
Data - Date

Timbro 

Firma autorizzata
Authorized signature

(Amanda Payne (Deputy Manager))

Scadenza - Expiry date 15/06/2025

Questo certificato, incluso l'allegato, può essere riprodotto solo integralmente e senza alcuna variazione.
This certificate, annex included, can only be reproduced in its entirety and without any change.

Pag. 1 di 1

Ente Certificazione Macchine srl
Via Co' Bella 243 - Loc. Castello di Serravalle - 08053 Valsamoggia (BO)
☎ +39 0516705141 📠 +39 0516705156 ✉ ecm@entecerma.it www.entecerma.it

ATEX Certified

G2 can be safely and reliably used in hazardous workplaces, such as gas stations, chemical industry and petrochemical industry.

It is proved not to be a source of ignition or explosion under potentially explosive atmospheres, and it can withstand a certain extent of blast and heat without causing a secondary explosion or fire.

Payment Methods

G2 accepts payments of magnetic strip cards, IC cards and contactless/NFC.



Magnetic Strip Cards



IC Cards



Contactless/NFC

Certifications



G2 Portable POS Terminal

<p>Operating System Linux</p>	<p>Printer High Speed Thermal Printer Paper Roll Width : 58mm, Diameter: 40mm</p>	<p>Battery 3.7V/2600mAh</p>
<p>Processor Arm CORTEX-A7 1.3GHz</p>	<p>Card Readers Magstripe Cards : Track 1/2/3, Bi-Directional, ISO7811 Smart Cards : EMV L1 & L2 Approved Contactless Cards : Type A/B, EMV L1 & L2, Paypass, PayWave and Amex Approved</p>	<p>Environmental Operating Temperature : 0° C to 50° C Storage Temperature : -20° C to 60° C Relative Humidity : 5% to 95%(Non-Condensing)</p>
<p>Memory 256MB Flash+256MB RAM</p>	<p>Peripheral Ports 1 x Micro-USB 1 x PSAM, 1 x SIM</p>	<p>Physical 165mm L x 78mm W x 56mm H 340g (Battery Included)</p>
<p>Display 2.4" TFT QVGA (320 x 240) Color Screen with Adjustable Backlight Resistive Touchscreen E-signature Supported</p>	<p>Communication 4G/3G/2G Wi-Fi, 2.4G 802.11b/g/n90 (Optional) BLE5.0 (Optional)</p>	<p>Voltage Input : 100 - 240V, 50-60Hz, 0.3A Output : 5V/1A</p>
<p>Keypad 10 Numeric Keys, 9 Function Keys Dustproof Built-in Password Keyboard</p>	<p>Audio Buzzer</p>	<p>Certifications PCI5.X, CE, EMV L1/L2, EMV CL L1, Paypass, PayWave, Amex, ATEX, etc.</p>

THANK YOU!

[NEXGOGLOBAL.COM](https://nexusglobal.com)

© 2020 NEXGO

